

ICG **INDOFINE Chemical Company, Inc.**

121 Stryker Lane, Bldg. 30, Suite 1 • Hillsborough, NJ 08844 • U.S.A.

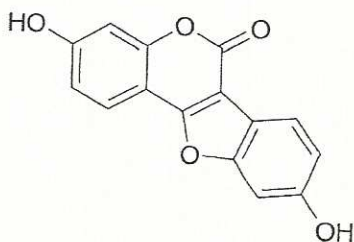
Phone: (908) 359-6778 • FAX: (908) 359-1179

website: www.indofinechemical.com

e-mail: chemical@indofinechemical.com

CERTIFICATE OF ANALYSIS

Catalog number: 020535
Product name: **COUMESTROL**
Cas Number: [479-13-0]
Lot Number: 1312406
Chemical Formula: C₁₅H₈O₅
Molecular Weight: 268.22
Appearance: Cream color powder
Solubility: Soluble in DMSO
TLC: Hexane:Ethyl acetate (6:4)
Moisture content: 0.4%
NMR Spectrum: Enclosed (Confirms to the structure)
Storage: Store in a cool dry place
Purity (HPLC): 99.06%





INDOFINE Chemical Company, Inc.

121 Stryker Lane, Bldg. 30, Suite 1 • Hillsborough, NJ 08844 • U.S.A.

Phone: (908) 359-6778 • FAX: (908) 359-1179

website: www.indofinechemical.com

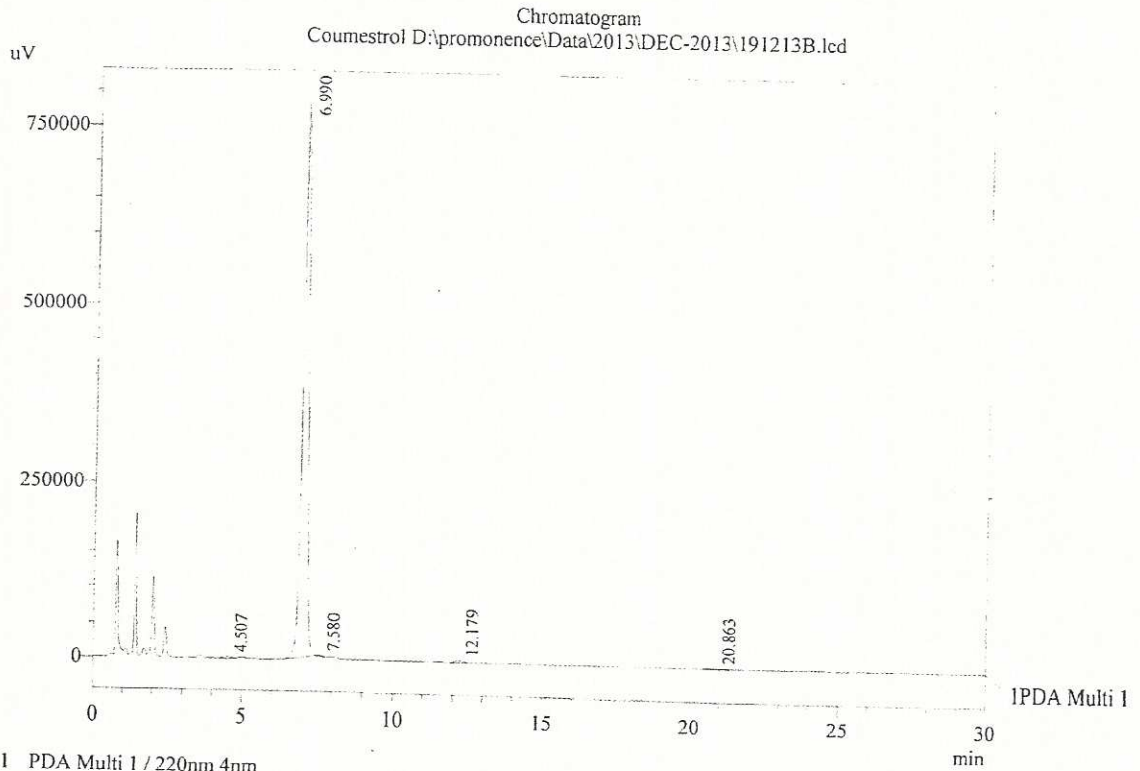
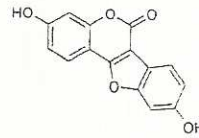
e-mail: chemical@indofinechemical.com

HPLC ANALYSIS

Acquired by : Sanjeev
Sample Name : Coumestrol
Sample ID : 2 gms Lot
Injection Volume : 20 uL
Data Filename : 191213B.lcd
Method Filename : Coumestrol.lcm

Catalog No.: 020535
Product Name: Coumestrol
Lot No.: 1312406

Column : Inertsil ODS-3V, (150mm x4.6mm 5.0µ)
Flow : 2.000 mL/min.
Mobile Phase : A(0.01M OPA in water) B(Acetonitrile)
0.01 70 30
20.0 50 50
25.0 50 50
30.0 70 30
Diluent : Ethanol: Acetonitrile: Water (4:1:5)



1 PDA Multi 1 / 220nm 4nm

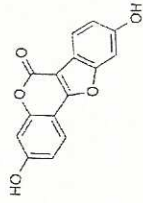
PeakTable

Peak#	Name	Ret. Time	Area	Area %	Relative Retention Time
1	RT:4.507	4.507	25267	0.24	0.64
2	Coumestrol	6.990	10242513	99.06	1.00
3	RT:7.580	7.580	12285	0.12	1.08
4	RT:12.179	12.179	38563	0.37	1.74
5	RT:20.863	20.863	21579	0.21	2.98
Total			10340206	100.00	



INDOFINE Chemical Company, Inc.
 121 STRYKER LANE
 BLDG. 30, SUITE 1
 HILLSBOROUGH, NJ 08844

Catalog No.: 020535
 Product Name: Coumestrol
 Lot No.: 1312406



COU-Final 1H NMR DMSO-d6

Analysed By : TJR

DFILE COU-Final-03.als
 COMNT COU-Final 1H NMR DMSO-d6
 DATIM Thu Dec 19 14:42:58 2013
 OBNUC 1H
 EXMOD NON
 OBFRQ 399.65 MHz
 OBSET 124.00 KHz
 OBFIN 10500.00 Hz
 POINT 65536
 FREQU 7992.01 Hz
 SCANS 16
 ACQTM 8.2002 sec
 PD 3.0000 sec
 PW1 5.80 usec
 IRNUC 1H
 CTEMP 20.1 c
 SLVNT DMSO
 EXREF 0.00 ppm
 BF 0.30 Hz
 RGAIN 18

